



**Prof. Dr. Avinash S. Jagtap**  
M.Sc. Ph.D.  
PRINCIPAL

E-mail : principal.tccollege@gmail.com

॥ सिद्धिरनेकान्तात् ॥

Anekant Education Society's

# TULJARAM CHATURCHAND COLLEGE

of Arts, Science and Commerce, Baramati - 413102.

Dist. Pune. Maharashtra, India.

Empowered Autonomous Status

Religious Minority Institute

NAAC Reaccredited 'A+' Grade, CGPA 3.55

NAAC-SSR

Cycle IV

2019 - 2024

## Criterion VII: Institutional Values and Best Practices

7.1.3  
Q1M

Describe the facilities in the Institution for the management of the following types of degradable and non-degradable waste

- Solid waste management
- Liquid waste management
- Biomedical waste management
- e-Waste management
- Waste recycling system
- Hazardous chemicals and radioactive waste management

### Geo-tagged Photographs of all Facilities

#### 1. Solid Waste Management

**Waste Segregation Units:** Separate bins for biodegradable and non-biodegradable waste across the campus.



Recyclable Waste: For paper, glass, metal, etc.





**Recyclable Waste: Plastic Waste (for plastic materials like bottles, containers, etc.)**



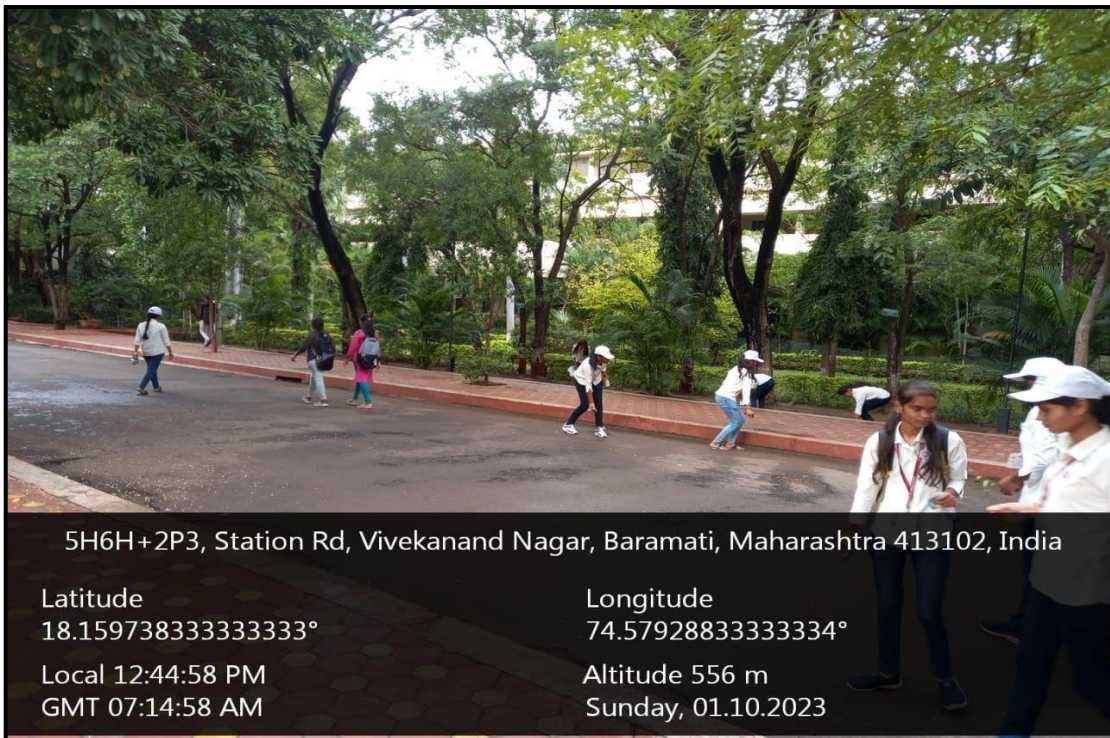
**Departmental Bin: Paper Waste (for paper and cardboard items)**







**Garbage collection campaigns on campus conducted by NSS students**



**Garbage collection campaigns on campus conducted by NSS students**





## On-Campus Recycling Units for solid waste



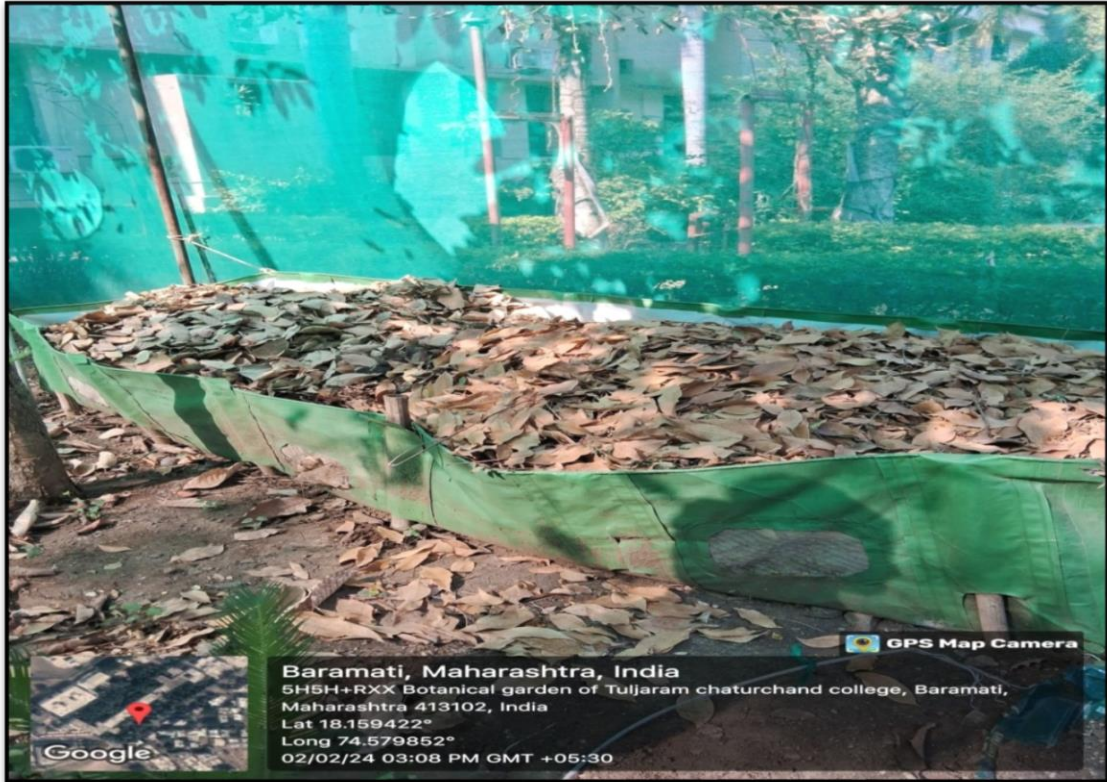
## Biogas Plant for biodegradable waste



## Biogas Plant for biodegradable waste: Main digester







**Composting Unit: vermicomposting facility**



**Composting Unit: vermicomposting pit**





## Transportation: Collection and transportation by local Municipal services



Regular collection of waste from bins and sorting points



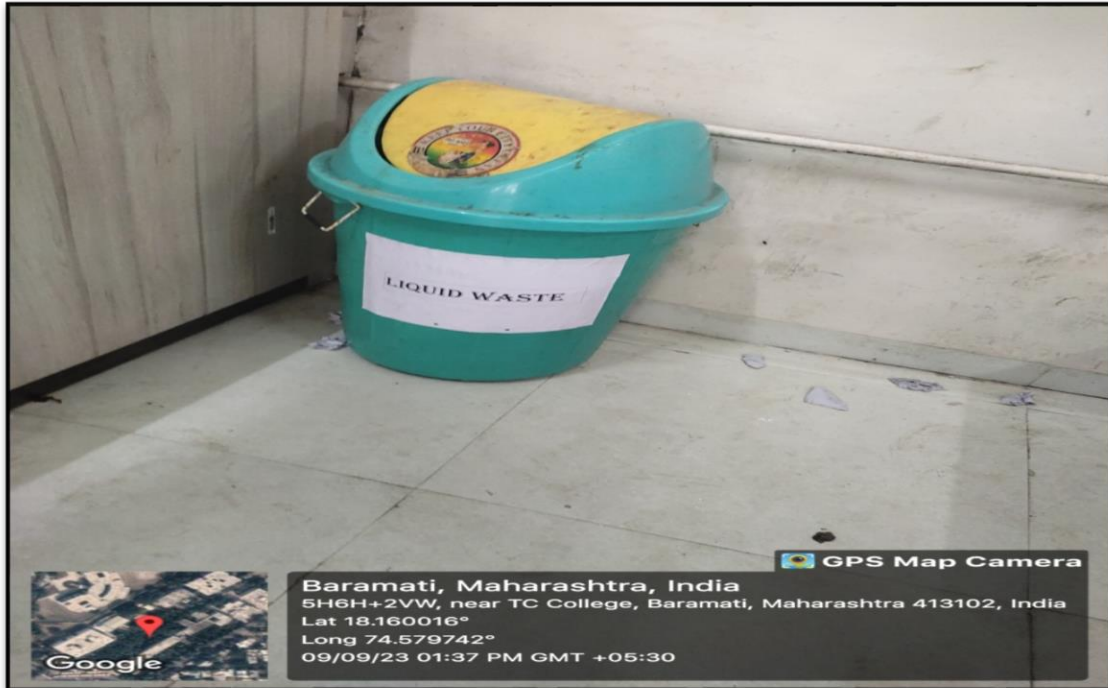
waste transported to appropriate recycling under the agreement with Baramati Municipal Corporation





## 2. Liquid Waste Management

Collection bin for liquid waste that cannot be disposed of in a basin



Non-Drainable Liquid Waste or Chemical Waste – Do Not Pour in Sink



Effluent Treatment Plant (ETP): For the treatment of wastewater







**Effluent Treatment Plant (ETP): Effluent collection and processing pits**

### Municipal Sewage System



**The campus is connected to the municipal sewage system through an effective drainage system**

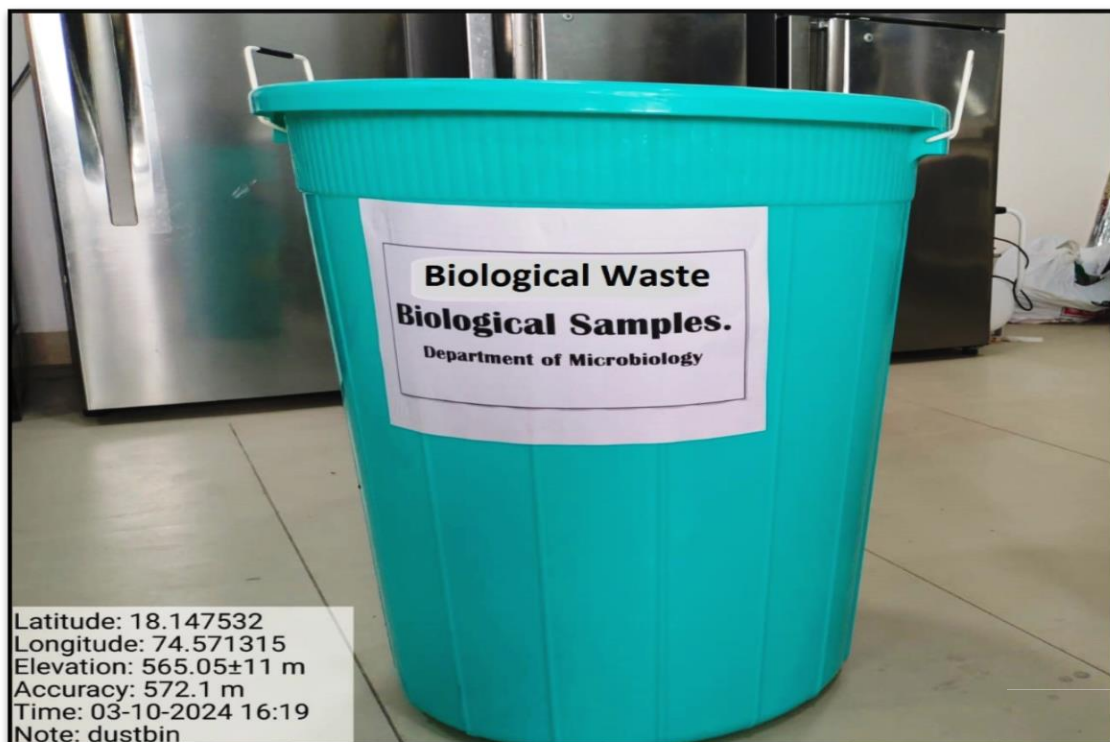


### 3. Biomedical Waste Management

#### Specialized Collection Bins



Bin for the collection of biomedical waste such as sharps, bandages etc.

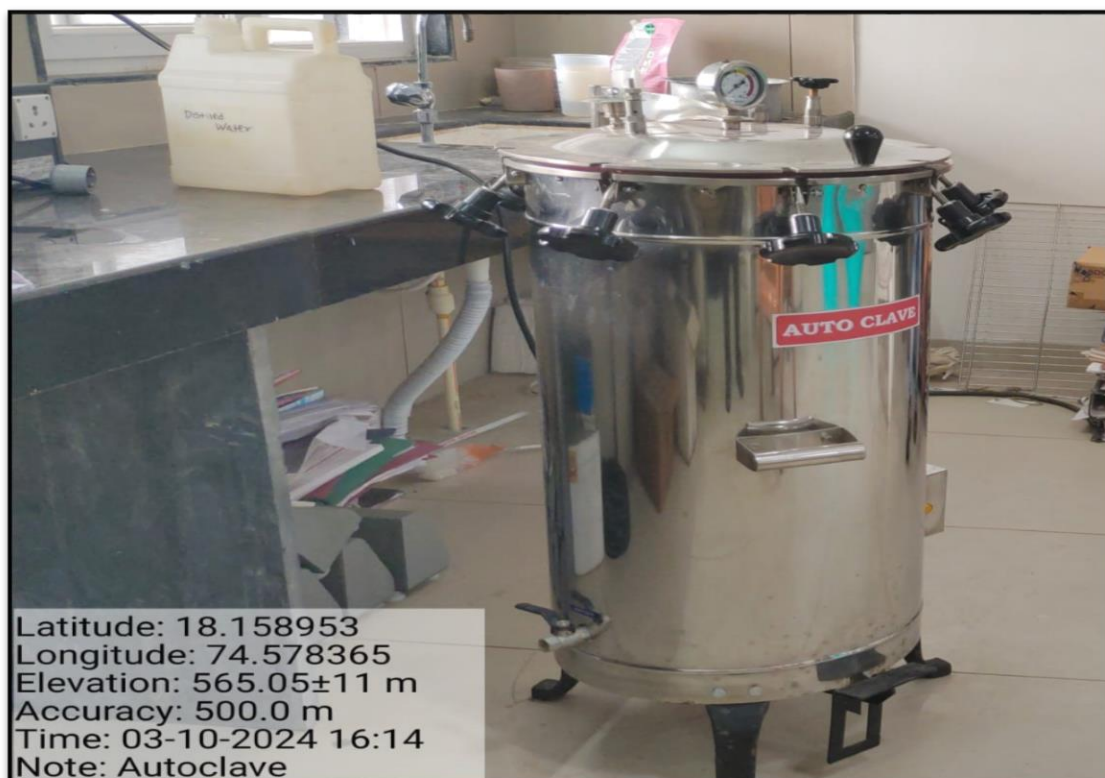


Bin for the collection of biomedical waste such as biological samples

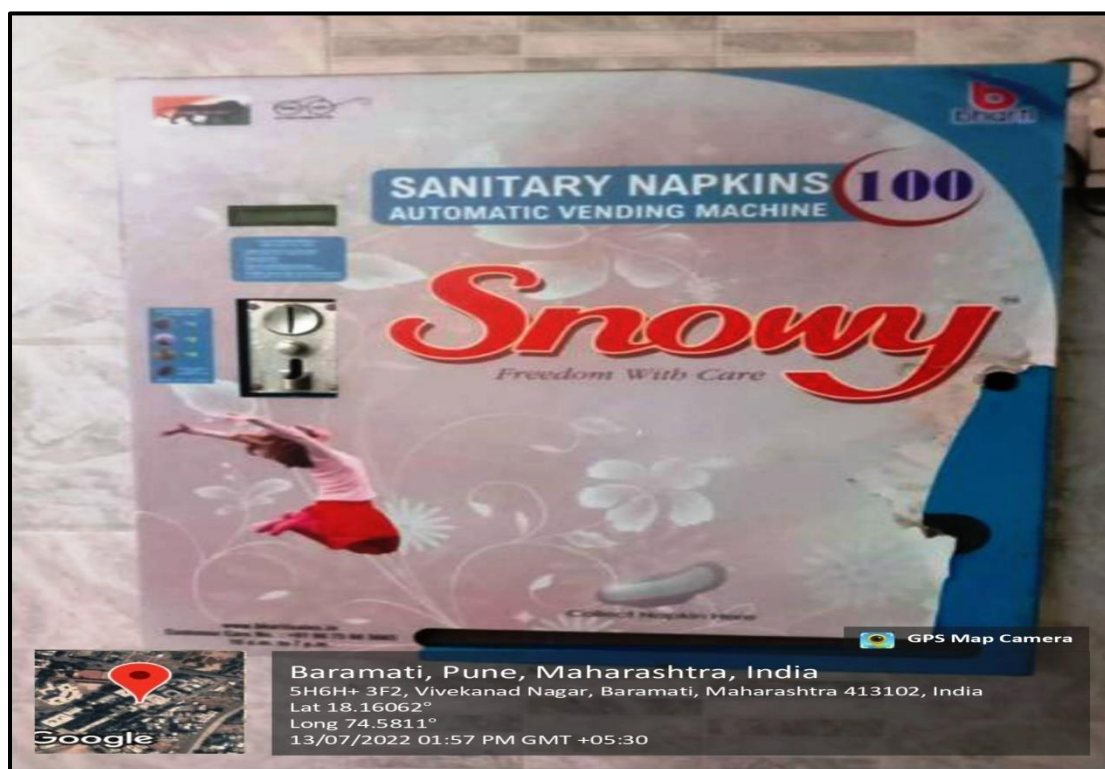




## On-Site Autoclave Unit



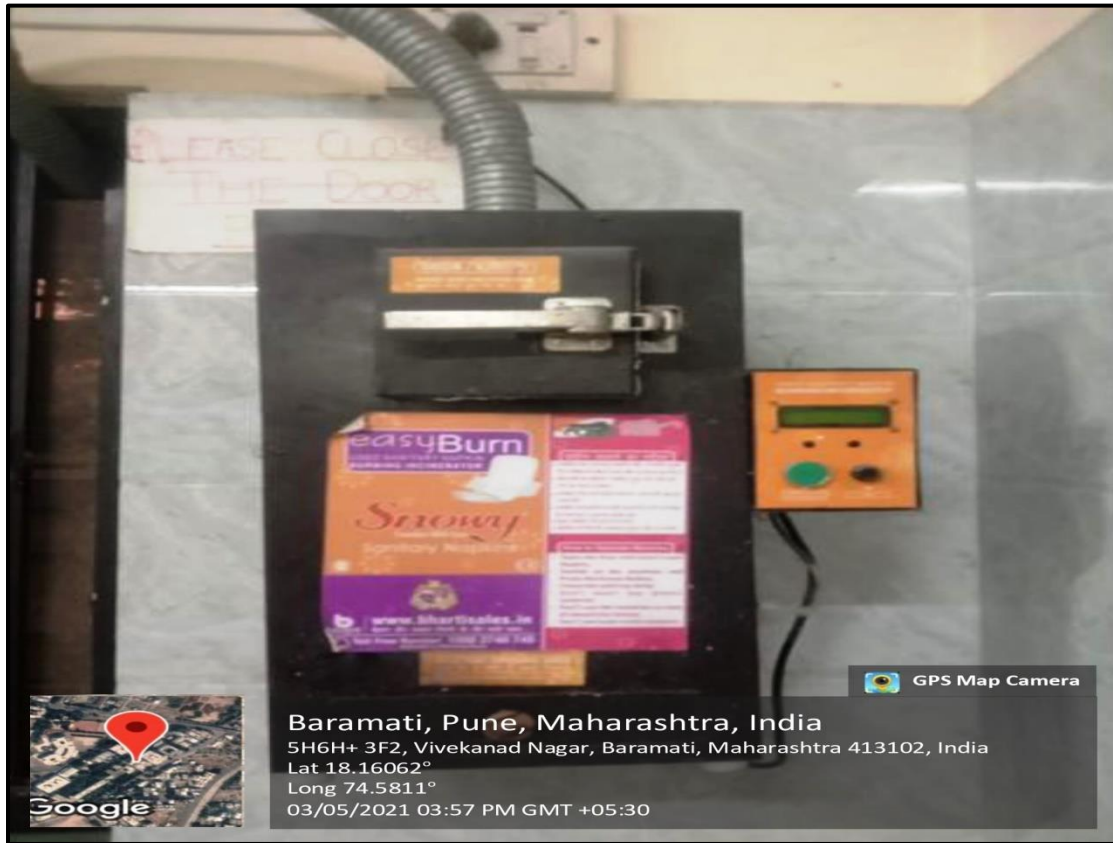
To sterilize biomedical waste before safe disposal



Automatic vending machine of sanitary napkins at girls hostel







**Incineration Facility: A small-scale incinerator or outsourcing incineration services for biomedical waste disposal.**





## 4. E-Waste Management

### E-Waste Collection Points



Designated areas for the disposal of old electronics such as computers, printers, and mobile phones.



Students submitting their e-waste goods at the collection point

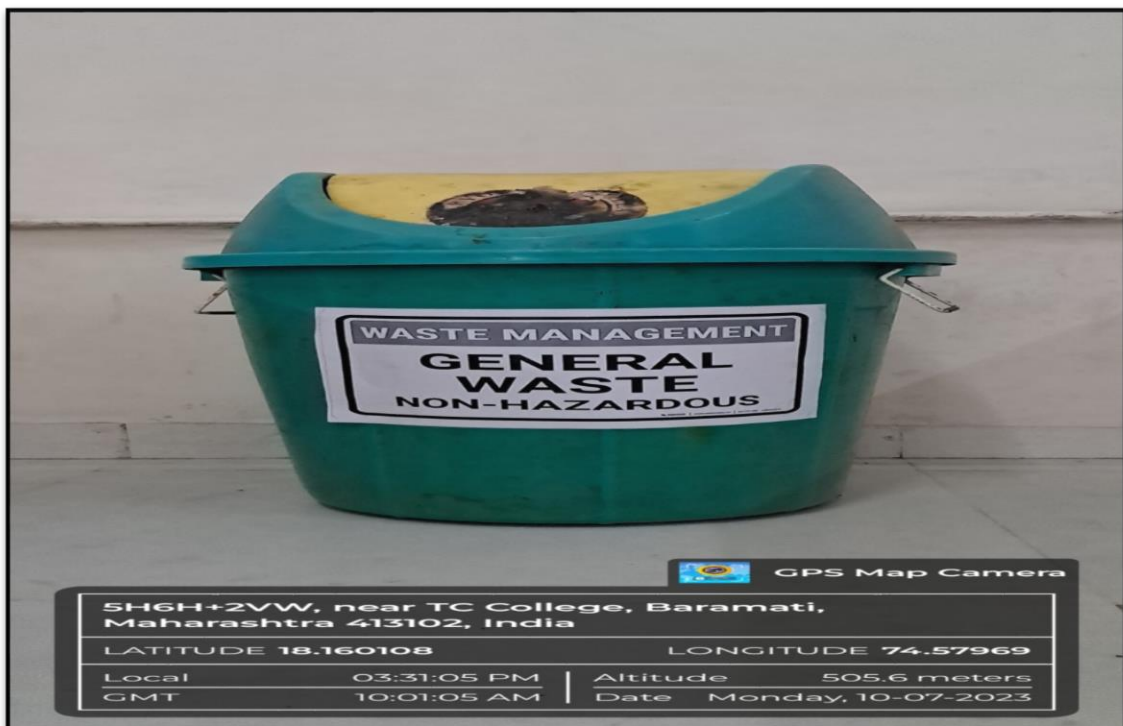


## 5. Hazardous chemicals and radioactive waste management

Properly designed containers and storage areas for hazardous chemicals



**Bin for hazardous waste: The chemicals are neutralized before disposal**



**Bin for non-hazardous waste**





**Proper ventilation systems to handle the use of hazardous chemicals.**



**Fume Hoods and Safety Equipment at chemistry laboratory**



  
Principal  
Tuljaram Chaturchand College  
Baramati